



BY **Priefert**[®]



YOUR TWO MOST VALUABLE ASSETS ARE *PEOPLE & EQUIPMENT*
PROTECT BOTH WITH R.I.G.S.

Is your current perimeter system enough?

Do you need different types of perimeter systems?

Would you like to make your sites easier to identify by your employees and contract workers?

We have the answer!

Safely protect the perimeters of your well sites and right of ways with RIGS Guarding Systems. We offer several different types of perimeter guards, each can be custom designed to fit your specific needs. An Architectural-Grade Powder Coat with UV Inhibitors helps the product resist scratching and sunlight damage, adding many years of life to your investment.



MAXIMIZE YOUR INVESTMENT BY SAVING TIME AND MONEY

Assembly in Minutes

No special skills required.

Accessibility

Quick removal of all or part for maintenance and workovers; can easily be taken down and reinstalled without destroying the fence.

Durable

Long lasting, heavy duty panels with UV protected Architectural Grade Powder Coat Finish provide security and maintain their appearance for years. RIGS Panels are recyclable and portable for repeated use at multiple sites.

Aesthetics Add Value

Attractive location sites please landowners while providing intrinsic value and a professional appearance to the asset.

Long Term Return

When compared to other perimeter guarding options (chain link or barbed wire) RIGS offers exceptional value in security and protection.



TABLE OF CONTENTS

Perimeter Guards

Panels.....	3
KenStakes.....	3
Wire Mesh.....	4

Cattle Guards.....5

Fencing Products

H-Braces.....	6
Gates.....	7

Color Chart.....7



PERIMETER GUARDS

SIX RAIL

Features:

Modular and Portable

Easily Adaptable, Reseusable, and Safe

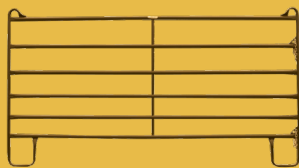
Multiple Lengths and Gauges Available

Architectural Grade Powder Coat Finish with UV Protectors



PANELS

UTILITY PANEL



Features:

Chain Connectors
 1-5/8" Round Tubing
 62" Tall
 Panel ends & stay are 18 ga.
 Rails are 20 ga.
 10' Length 49 lbs
 12' Length 58 lbs
 16' Length 75 lbs

ECONOMY PANEL



Features:

Chain Connectors
 1-5/8" Round Tubing
 62" Tall
 Panel ends & stay are 18 ga.
 Rails are 20 ga.
 10' Length 46 lbs
 12' Length 53 lbs

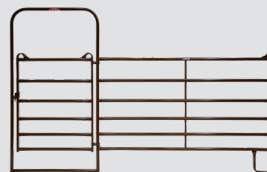
ACCESSORIES

KENSTAKE



A KenStake is a 10" long 1/2" rod with welded cap and connected chain used to keep your Perimeter Guard panels from shifting or being moved by animals. KenStakes also deter theft.

WALK-THRU PANELS



Available in our Utility or Economy line, these panels include a "walk thru" gate to provide easy access to your equipment.



EASY ACCESS FOR REPAIRS

Greater availability to work on projects without destroying the fencing



PERIMETER GUARDS

WIRE MESH

BY **Priefert**



Features:

72" Tall Panels

Galvanized 1-5/8" Tubing

8 Gauge 2"x4" Non-Climb Wire Mesh

Modular and Portable

Easily Adaptable, Reusable, and Safe

Multiple Lengths Available

Architectural Grade Powder Coat Finish with UV Protectors

Includes 3-Way Connectors



CATTLE GUARDS

PRIEFERT'S CATTLE GUARDS ARE DESIGNED TO BE PLACED IN FENCE LINES IN PLACE OF A GATE TO ALLOW FOR EASY DRIVE THRU ACCESS WHILE STILL SAFELY CONTAINING CATTLE.



ITEM #	WIDTH	LENGTH	HEIGHT	CAMBER RISE	WEIGHT
CAT1012	8' - 1/16'	12' - 1 1/16'	21 1/16'	1 1/4'	1,838 lb
CAT1014	8' - 1/16'	14' - 1 1/16'	21 1/4'	1 7/16'	2,123 lb
CAT1016	8' - 1/16'	16' - 1 1/16'	21 1/2'	1 11/16'	2,408 lb
CAT1018	8' - 1/16'	18' - 1 1/16'	22 5/16'	2 1/2'	2,731 lb
CAT1020	8' - 1/16'	20' - 1 1/16'	22 5/16'	2 1/2'	3,016 lb
CAT1022	8' - 1/16'	22' - 1 1/16'	23 1/8'	3 5/16'	3,301 lb
CAT1024	8' - 1/16'	24' - 1 1/16'	23 1/8'	3 5/16'	3,585 lb
CAT9312	8' - 3/16'	12' - 1 1/8'	21 1/4'	1 1/4'	2,455 lb
CAT9314	8' - 3/16'	14' - 1 1/8'	22 3/8'	1 7/16'	2,836 lb
CAT9316	8' - 3/16'	16' - 1 1/8'	22 5/8'	1 11/16'	3,217 lb
CAT9318	8' - 3/16'	18' - 1 11/16'	23 7/16'	2 1/2'	3,647 lb
CAT9320	8" - 3/16"	20" - 1 11/16"	23 7/16"	2 1/2"	4,134 lb
CAT9322	8' - 3/16'	22' - 1 11/16'	24 5/16'	3 5/16'	4,407 lb
CAT9324	8' - 3/16'	24' - 1 11/16'	24 5/16'	3 5/16'	4,895 lb

Features:

Priefert Cattle Guards adhere to AASHTO guidelines.

No concrete footing is required for installation.

Priefert cattle guards are built with a camber to better match the crown of most roads. *Cambered installations need matching cambered ground preparation

This set-in-place Cattle Guard is ideal for agriculture operations in need of containing livestock without impeding road travel.

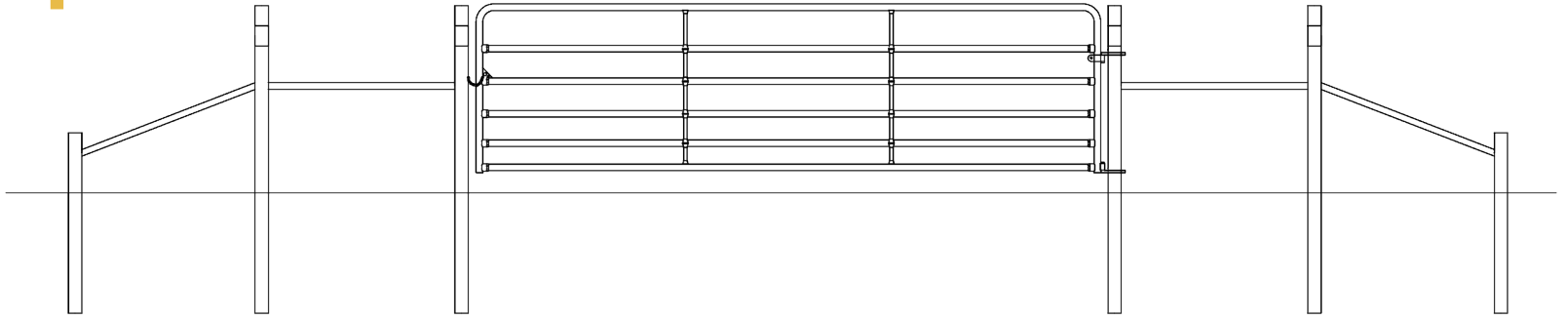
Metal skirting along the sides of the guard help prevent fill dirt from falling into the open space below the guard. Open ends allow for water drainage.

6-1/8 Rail Spacing

Cattle Guard Runners (CATGR) are available, sold separately



H-BRACES



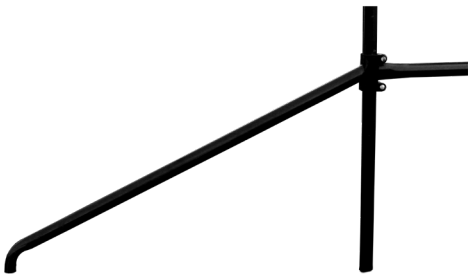
STRAIGHT H-BRACE

Features:

2-7/8"

4' and 8' Lengths

Post Height 94"



BOLT-ON DEADMAN

Features:

2.87" OD 11 gauge steel tubing

Overall Length 96"

Overall Width 3"



HINGED H-BRACE

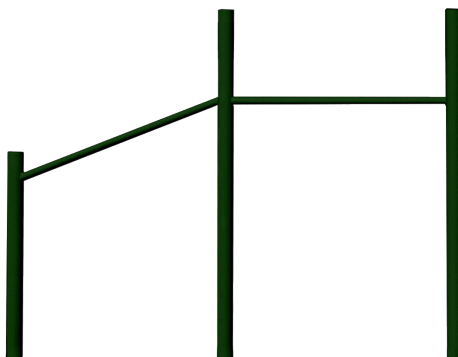
Features:

2-7/8" OD

4' x 4' Lengths

Post Height 94"

"Domed" Tops create smooth surfaces with no sharp edges and keeps moisture out.



4" POST H-BRACE W/ DEADMAN

Features:

H-Brace is 9' long

Posts are 4" OD 3/16" thick with flat capped tops

Main posts are 7'8" long and are designed to be concreted 3' in the ground and have 4'8" above ground.

Hinge side H-Brace comes predrilled and ready to mount your Priefert gate.

GATES

BY PRIEFERT

An Architectural Grade Powder Coat Finish with UV Inhibitors helps the gate resist scratching and sunlight damage, adding many years of life to your investment.

Gates are 5" shorter than stated length to allow proper clearance

ECONOMY GATE

PART #	LENGTH	HEIGHT	WEIGHT
RG04	4'	50 1/2"	19 lbs
RG06	6'	50 1/2"	25 lbs
RG08	8'	50 1/2"	33 lbs
RG10	10'	50 1/2"	44 lbs
RG12	12'	50 1/2"	52 lbs
RG14	14'	50 1/2"	59 lbs
RG16	16'	50 1/2"	68 lbs
RG18*	18'	50 1/2"	90 lbs
RG20*	20'	50 1/2"	97 lbs

Also available in Galvanized
Includes hanging hardware
End Frame 1.66" OD 18 ga. tubing
Single Piece Vertical Stay 1" OD 18 ga. tubing
Rails 1.66" OD 20 ga. tubing

*18' and 20' lengths come as a single piece gate

WIRE FILLED ECONOMY GATE

PART #	LENGTH	HEIGHT	WEIGHT
RWG04	4'	50 1/2"	21 lbs
RWG06	6'	50 1/2"	29 lbs
RWG08	8'	50 1/2"	37 lbs
RWG10	10'	50 1/2"	45 lbs
RWG12	12'	50 1/2"	52 lbs
RWG14	14'	50 1/2"	57 lbs
RWG16	16'	50 1/2"	66 lbs

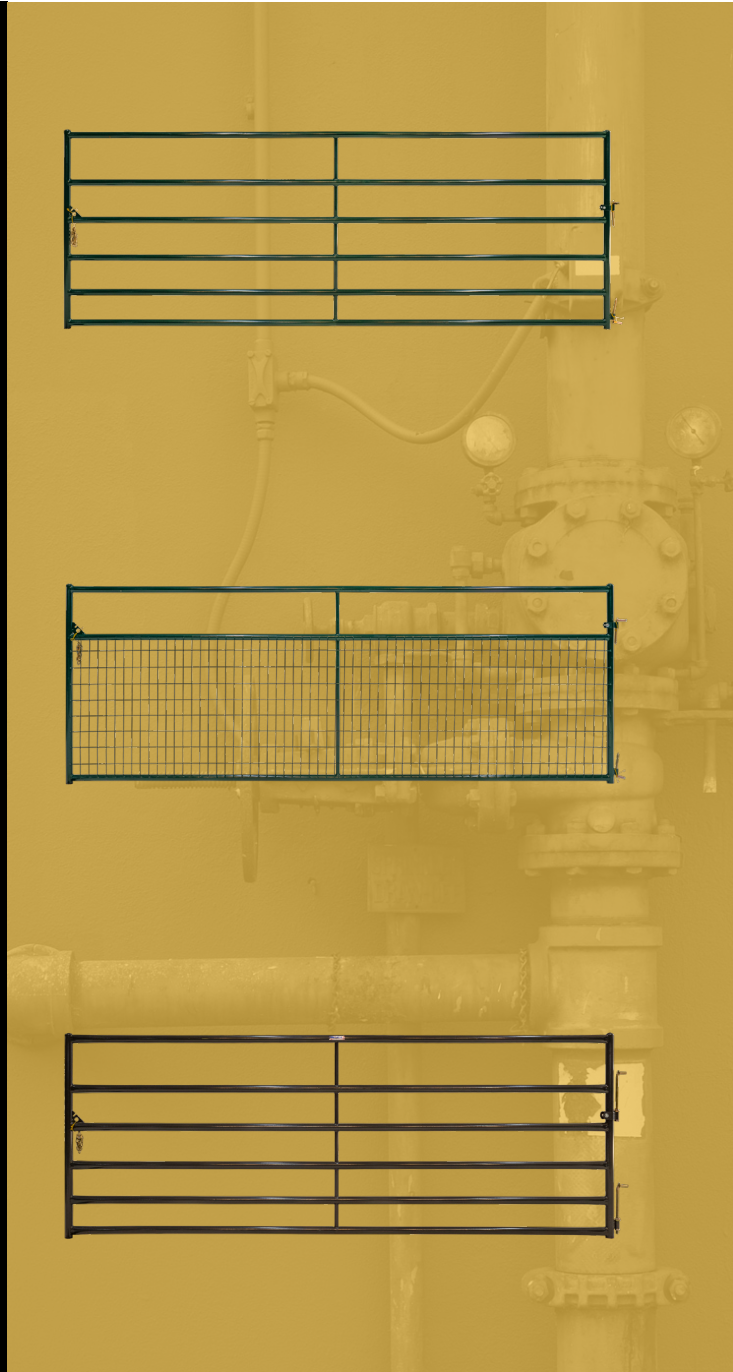
Also available in Galvanized
Includes hanging hardware
Frame 1.66" OD 18 ga. tubing
Single Piece Vertical Stay 1" OD 18 ga. tubing
Rails 1.66" OD 20 ga. tubing

BULL GATE

PART #	LENGTH	HEIGHT	WEIGHT
RG204	4'	50 3/4"	40 lbs
RG206	6'	50 3/4"	53 lbs
RG208	8'	50 3/4"	69 lbs
RG210	10'	50 3/4"	87 lbs
RG212	12'	50 3/4"	102 lbs
RG214	14'	50 3/4"	114 lbs
RG216	16'	50 3/4"	127 lbs
RG218*	18'	50 3/4"	160 lbs
RG220*	20'	50 3/4"	176 lbs

Also available in Galvanized
Includes hanging hardware
1.050" OD 18 ga Single Piece Vertical Stay(s) through drilled 2" OD horizontal rails
Double Balled-end End Pipe and Rails Constructed from 16 ga Tubing.

*18' and 20' lengths come as a single piece gate



OPTIONAL COLOR CHART FOR ALL GUARDING SYSTEMS

* Safety Yellow available for an upcharge



Black



Barn Red



Forrest Green



Saddle Brown



Safety Yellow*



Gunmetal Gray

CHECK OUT THESE & HUNDREDS OF OTHER GREAT PRODUCTS



CATTLE EQUIPMENT



PREMIER HORSE STALLS



ROPING EQUIPMENT



ARENAS & ROUND PENS



EQUINE EQUIPMENT



HORSE WALKERS



SHEEP, HOG, & GOAT



CANINE ENCLOSURES



POULTRY EQUIPMENT

800.527.8616 | [PRIEFERT.COM](http://Priefert.com)

BRORIGS_V7_04_2025