



*Unbridled Commitment*



**HORSE STALLS, HORSE WALKERS, ROUND PENS,  
ARENAS & MORE...**

[www.priefert.com](http://www.priefert.com) | 800.527.8616





## Table of Contents

### EQUINE EQUIPMENT

No product line exemplifies Priefert's commitment to quality and safety more than our equine equipment. We understand that horse owners want their valued animals to be safe, happy, and healthy, and that all starts with the right equipment for housing, feeding, and exercising. From panels to feeders and from stalls to horse walkers, Priefert offers safe, practical products for your horse, regardless of discipline.

PREMIER STALLS .....	4
PREMIER POLY STALLS.....	5
EXPO STALLS.....	7
HORSE WALKERS .....	8
ROUND PENS.....	10
PANELS & GATES.....	12
FENCING.....	14
HORSE FEEDERS.....	16
HORSE WATERERS.....	17
ARENAS.....	18
ROPING EQUIPMENT.....	20
HORSE STOCK.....	22
LAND GROOMING EQUIPMENT .....	23

## Unbridled Commitment to...

### SAFETY

*Safe for both horse  
and handler*

### QUALITY

*Attractive, Durable, and  
Long Lasting*

### CUSTOMER SATISFACTION

*Above and Beyond the  
Industry Standard*

### YOUR HORSE

*Safe, Happy, and Healthy*





# Premier Wood Stalls

Available Colors:  



## PREMIER STALL FRONTS BAR/WOOD

Priefert's Premier Stalls have been a mainstay in the equine industry for decades. Premier Stalls are safe, attractive, and affordable. This Premier Stall Front combines a vertical bar top with a wood-filled bottom (Wood Kit sold separately). These stalls are designed with the highest degree of consideration for the safety of both the horse and handler.

**\* WINDOW/FEEDER OPTION SOLD SEPARATELY**

ITEM #	WIDTH	HEIGHT	WEIGHT
HSF10	10'	90"	195 lbs
HSF10	12'	90"	210 lbs



## PREMIER STALL PANELS BAR/WOOD

This Premier Stall Panel combines a vertical bar top with a wood-filled bottom (Wood Kit sold separately). These stalls are designed with the highest degree of consideration for the safety of both the horse and handler.

ITEM #	WIDTH	HEIGHT	WEIGHT
HSP10W	10'	90"	136 lbs
HSP12W	12'	90"	173 lbs

**2' & 4' SECTIONS ALSO AVAILABLE**



## PREMIER STALL PANELS SOLID WOOD

This solid wood-filled stall panel is an ideal choice for any horse that requires isolation from adjoining stalls (Wood Kits sold separately).

ITEM #	WIDTH	HEIGHT	WEIGHT
HSP10SW	10'	90"	125 lbs
HSP12SW	12'	90"	148 lbs


**2' & 4' SECTIONS ALSO AVAILABLE**



"Priefert products make life better for me and my horses. On my ranch, Priefert stands out! It begins with my Priefert Panel Walker, then my roping chute, panels, arena master, land grader, and for sure my Priefert stalls. All these products are of the highest quality and made to last! From the company's beginning in 1964, Priefert has been a leader and innovator, building all products with safety and security in mind."

**AL DUNNING** | Professional Horseman

# Premier Poly Stalls

Available Colors: 



## PREMIER STALL FRONTS POLY INSTALLED

Priefert's Premier Poly-filled Stalls offer the best of both worlds by combining the popular Premier Stall design with the durable high density poly that comes installed. Not only are these stalls safe and attractive, but they are also easy to clean. Our poly is specially formulated to be high impact resistant.

**\* WINDOW/FEEDER OPTION SOLD SEPARATELY**

ITEM #	WIDTH	HEIGHT	WEIGHT
HSF10PI	10'	90"	lbs
HSF12PI	12'	90"	lbs



## PREMIER STALL PANEL POLY INSTALLED

This Premier Stall Panel combines a vertical bar top with a high density poly installed bottom.

ITEM #	WIDTH	HEIGHT	WEIGHT
HSP10PI	10'	90"	lbs
HSP12PI	12'	90"	lbs

**2' & 4' SECTIONS ALSO AVAILABLE**



## PREMIER STALL PANEL POLY INSTALLED

This Premier Stall Panel features a steel frame with a poly installed top and bottom.

ITEM #	WIDTH	HEIGHT	WEIGHT
HSP10SPI	10'	90"	lbs
HSP12SPI	12'	90"	lbs

**2' & 4' SECTIONS ALSO AVAILABLE**



"There are three main reasons why my family and I use and believe in Priefert products. The first is their absolute attention to safety for both animals and humans. Second, is the superior quality with which they build their equipment. Last, but certainly not least, is that all their products are manufactured in the USA by a family who is not just a part of our industry, but who actively shares our values and lives our lifestyle."

**TAMMY PATE** | Professional Horsewoman

# Stall Wood Kits & Accessories

## WOOD KITS

Designed to fit Priefert Premier stalls, add strength and beauty to your stalls by purchasing our stained, pre-cut, tongue & grooved wood kits.

ITEM #	USE WITH	WEIGHT
WOOD10	Bottom of 10' Stall Front or Panel	171 lbs
WOOD12	Bottom of 12' Stall Front or Panel	212 lbs
WOODTOP	Top of 10' or 12' Solid Wood Stall Panel	153 lbs

## PREMIER HORSE STALL FEEDER

For convenient feeding without entering the stall, choose Priefert's Premier Stall Feeder in place of a window option with your Premier Stall Front (sold separately).

ITEM #	USE WITH
HSFF	Wood Stall Fronts
HSFFP	Poly Stall Front

## PREMIER HORSE STALL WINDOW (HSFWIN)

This powder-coated window operates on a simple pivot, and is designed to blend in beautifully with the stall's vertical bar top.

## STALL STARTER POST

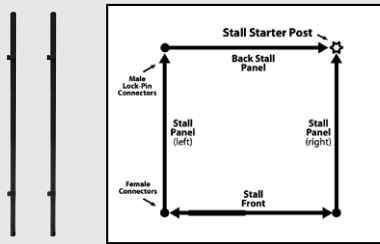
Stall Starter Posts are required for starting a new run of stalls if you are not connecting those stalls to a wall or other existing structure.

ITEM #	DESCRIPTION	WEIGHT
SSP2	2-Way Connector	10.3 lbs
SSP3	3-Way Connector	10.65 lbs

## STALL FRONT POST CONNECTORS

The Horse Stall Front Post Connectors work to connect a stall front or panel to a post or a wall.

ITEM #	CONNECTION
HSFPCSS	Double Connector with Standard Spacing
HSFPCS	Single Stall Connector



# Expo Stalls

Available  
Color:



## HORIZONTAL BAR TOP

### EFH10PI (Stall Front) | EPH10PI (Stall Panel)

Priefert's 10' Expo Stalls are safe, durable, attractive, and easy to install. These stalls can be found at America's premier fairgrounds, exposition centers, race tracks, and equestrian centers, including facilities like the 3000 stall Super Barn in Oklahoma City, the Will Rogers Complex in Ft. Worth, and the Tulsa Expo Center.

\* Available in 3/8 & 1/4" Poly options

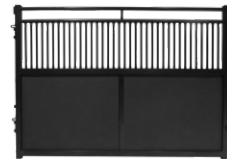
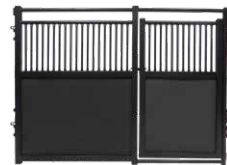


## VERTICAL BAR TOP

### EFV10PI (Stall Front) | EPV10PI (Stall Panel)

Priefert Expo Stalls are used to house some of the most elite horses in the world during major events and competitions. Each stall is built to a strict standard for safety and durability. These stalls are constructed from 16 gauge steel and feature an attractive black powder coat.

\* Available in 3/8 & 1/4" Poly options

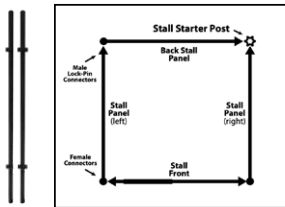


## SOLID STALL PANEL | EPS10PI

Solid Stall Panels are ideal for providing separation and limiting contact between animals

## EXPO STALL STARTER POST

Stall Starter Posts are required for starting a new run of stalls when not connecting those stalls to an existing structure.



ITEM #	DESCRIPTION	WEIGHT
ESP22.4	2-Way Connector	10.3 lbs
ESP32.4	3-Way Connector	10.65 lbs

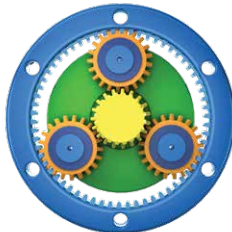


# THE PRIEFERT PANEL WALKER IS THE PREMIER FREE WALKER IN THE INDUSTRY!

Available in 4, 6, or 8 horse configurations, there is no other horse walker on the market that is as advanced. Unlike traditional walkers, the Priefert Panel Walker eliminates the need to tie your horses to the walker, so they are able to move about more freely and naturally. Panel walkers “push” the horse instead of “pulling” it. Horses that have never been in a walker before become trained to use the walker instantly.



## Standard Features



**PLANETARY GEAR BOX-** Never worry about burning belts again. Priefert Walkers run on a planetary gear box system similar to those used in heavy earth moving equipment like track hoes. This provides years of virtually maintenance free, reliable operation.



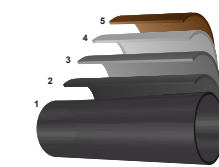
**SERIOUS “HORSE POWER”** - The power of a Siemens 3 horse power motor has the strength, speed, and torque to withstand 2000 pounds of downward pull while conditioning up to eight horses at once.



**WIRELESS REMOTE CONTROL** - Bring your horses from a slow walk to a fast trot with variable speed controls, reverse direction, or even stop the walker all from your front porch using our convenient pocket-sized remote control.



**CONTROL BOXES** - Priefert offers two control boxes to choose from. Our standard push button control box features large labeled buttons and a convenient timer with 3 preset time increments. Our touch screen control box allows you to program automated workouts for your horses



(1) Pipe (2) Phosphate Adhesion Wash (3) Conversion Coating (4) UV Inhibitor (5) Powder Coating

**WEATHER PROOF FINISH** - Every Priefert Walker is powder coated in our in-house facility using a durable architectural grade powder coat finish which will extend the life and beauty of your purchase for years to come.



**WHISPER QUIET-** All Priefert Walkers are whisper quiet. In fact, we measured the decibel output of the walker and found that it produced only 60 decibels of noise. Imagine a seventy foot diameter, eight horse walker that produces less noise than your household clothes dryer.

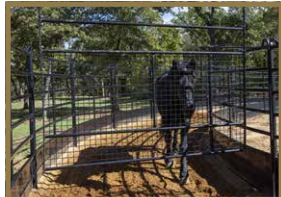


**OPTIONAL SPRINKLER SYSTEM-** Priefert's sprinkler system enhances the drag's effectiveness and keeps the ground moist to eliminate dust. Just attach any outdoor water hose to the walker's sprinkler hookup and you are ready to go. This add-on is a great addition to any Panel Walker system.



**ROUND PEN DRAG** - Save time in maintenance and improve the consistency of your ground with Priefert's optional round pen drag. The drag attaches to the walker's arms to move dirt from inside to out or outside in depending upon the need. By eliminating ruts with the drag, the conditioning track will be more consistent and improve the effects of the overall workout.

*\*Never use drag with horses in the round pen.*



**DIVIDER PANELS** Low impedance electrically-charged, free swinging divider panels encourage horses that have a tendency to lag behind to keep pace. Each divider panel is made of heavy duty 2"x2" 4 gauge wire mesh, and the electrical charge is optionally activated at the control box.

# Panel Walker Specifications

PANEL WALKERS	4-HORSE	6-HORSE W/50	6-HORSE W/70	8-HORSE
Outer Round Pen	42'	50'	70'	70'
Arm Length	20'	25'	35'	35'
Space Between Divider Panels	25.17'	22.50'	32.75'	24.71'
Inner Round Pen	23.95'	33.74'	54.13'	54.13'
Outer Round Pen	40.73'	51.24'	71.64'	71.64'

ROUND PENS	HEIGHT	LENGTH	HEIGHT OF SHEETING	GAUGE
Horizontal Rails	6'	8'	20"	16
Wire Mesh	6'	8'	20"	16 Ga Rails   4 GA Wire

CONTROL BOX	TIMER	DIRECTION	SPEED	CHARGER
Push Button	15-30-60 min.	Forward-Reverse	Adjustable w/ Meter	On & Off
Touch Screen	15-30-60 min.	Forward-Reverse	Digital in MPH	On & Off

Number of Programmable Routines: 20 @ 12 Steps Per Routine





# Lead Walkers | NO BELTS TO BURN

## 4,6,8, HORSE MODELS AVAILABLE

Priefert's Lead Walker sets the standard for features, ease of use, and durability. With a snap of a halter and the push of a button, your horses are ready to be conditioned.

From the Lead Walkers' innovative safety features to its virtually maintenance-free planetary gearbox, no other lead walker on the market can offer you the quality and value that you will find with Priefert. The Priefert Lead Walker is perfect for warming up, cooling down, or rehabilitating horses.



## STANDARD FEATURES

- Planetary Gearbox • Whisper Quiet Operation • 3 Horsepower Siemens Motor • Variable Speed Adjustment • Operates in Forward or Reverse • Smart Lead Technology • Standard Push Button Control Box or Optional Programmable Touchscreen • Wireless Remote Control • Emergency Releases • Emergency Shutoff • Architectural Grade Powder Coat Finish

# Premium Sheeted-Bottom Round Pens

## HORIZONTAL RAILS

Each curved panel is a full 6' tall and made of heavy-duty 16 gauge quadraform tubing. Solid bottom sheeting keeps the dirt in the pen.

ITEM #	DESCRIPTION
SBRP40	40' Solid Bottom Round Pen
SBRP50	50' Solid Bottom Round Pen
SBRP60	60' Solid Bottom Round Pen
SBRP70	70' Solid Bottom Round Pen
SBRP80	80' Solid Bottom Round Pen



Height: 6' | Panel Length: 8'  
Height of sheeting: 20" | Ga. : 16  
Available Color:

## WIRE MESH

Wire Mesh panels are 2"x2" heavy-duty, 4 gauge wire mesh tops with sheeted bottoms.

ITEM #	DESCRIPTION
SBRPW40	40' Solid Bottom Mesh Round Pen
SBRPW50	50' Solid Bottom Mesh Round Pen
SBRPW60	60' Solid Bottom Mesh Round Pen
SBRPW70	70' Solid Bottom Mesh Round Pen
SBRPW80	80' Solid Bottom Mesh Round Pen



Height: 6' | Panel Length: 8'  
Height of sheeting: 20" |  
Ga. : 16 Rails 4 GA Wire  
Available Color:

# Traditional Panel Round Pens

## ECONOMY ROUND PENS



SIZE	GATE	#	PANEL	#
RP40	RBG069	1	RP12	10
RP50	RBG069	1	RP12	13
RP60	RBG069	1	RP12	15
RP70	RBG069	1	RP12	18

Available Colors:

## UTILITY ROUND PENS



SIZE	GATE	#	PANEL	#
UP40	UBG069	1	UP12	10
UP50	UBG069	1	UP12	13
UP60	UBG069	1	UP12	15
UP70	UBG069	1	UP12	18

Available Colors:

## PREMIER ROUND PENS



SIZE	GATE	#	PANEL	#
PP40	PBG069	1	PP12	10
PP50	PBG069	1	PP12	13
PP60	PBG069	1	PP12	15
PP70	PBG069	1	PP12	18

Available Colors:

## PREMIER TALL ROUND PENS



SIZE	GATE	#	PANEL	#
PPT40	PBGT069	1	PPT12	10
PPT50	PBGT069	1	PPT12	13
PPT60	PBGT069	1	PPT12	15
PPT70	PBGT069	1	PPT12	18

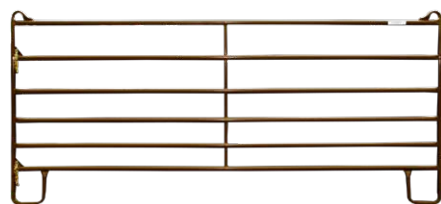
Available Color:

*"As a proud Australian Horseman and Stockman, I have worked in many horse enclosures from all levels and am constantly impressed with the quality of Priefert's equipment. From their incredible attention to detail and safety, to their constant need to improve, they fit into my same philosophies as a Horseman and leader in my industry."*

**GUY MCLEAN** | Professional Horseman



# Panels & Gates



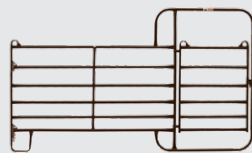
**UTILITY PANEL | UP** Priefert's Utility Panels are versatile and safe for the vast majority of horse owners' needs. "Fishhook" tops combined with oval end frames and chain connectors help insure a snug fit while eliminating space between panels. J-legs help keep panels from sinking in soft ground and allow panels to slide when portability is required. Priefert is the only panel maker in the industry to use "drilled stays" which increase safety and strength. An Architectural Grade powder coat finish helps this panel resist scratching and the deteriorating effects of the weather.

Available in 10', 12', and 16' lengths.\* Available Color:



### UTILITY BOW GATE (UBG)

PRODUCT #	HEIGHT	WIDTH	WEIGHT
UBG04	7'	4'	47 lbs
UBG069	9'	6'	108 lbs



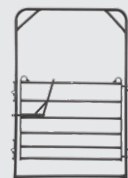
### UTILITY WALK THRU PANELS (UWT)

PRODUCT #	LENGTH	WEIGHT
UWT10	10'	76 lbs
UWT12	12'	82 lbs



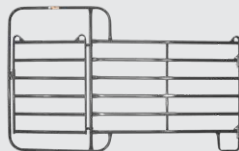
**PREMIER PANEL | PP** For over 25 years Priefert's Premier Panels have proven to have outstanding popularity among horse and cattle owners alike. This is our "first" panel and the one that provides the most versatility, superior durability, and arguably the best value of any panel on the market. Our unique Quadraform™ tubing offers increased flexibility while providing amazing capacity for remaining upright should an animal try to go over it. The single piece vertical stay through drilled rails adds even more strength and safety. An Architectural Grade powder coat finish helps this panel resist scratching and the deteriorating effects of the weather. For round pens, paddocks, corrals, sweeps, or anywhere confinement is needed, Priefert's Premier Panels are a solid choice!

Available in 6', 8', 10', 12', 14', and 16' lengths.\* Available Color:



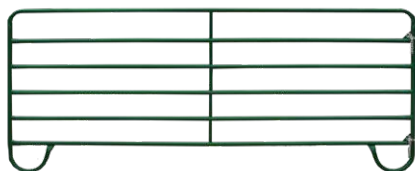
### PREMIER BOW GATE (PBG)

PRODUCT #	LENGTH	WEIGHT
PBG04	7'	61 lbs
PBG069	9'	126 lbs



### PREMIER WALK THRU PANELS (PWT)

PRODUCT #	LENGTH	WEIGHT
PWT10	10'	110 lbs
PWT12	12'	123 lbs



**ECONOMY PANEL | RP** Priefert's most affordable panel suitable for horse owners. With loop legs, the economy panel is easy to move around for everyone. Its 65" height, single piece vertical stay and chain connectors enhance safety for horses that accept confinement. Available with an Architectural Grade powder coat finish that resists the elements.

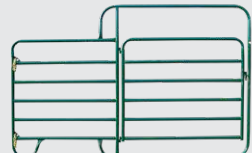
\*Panels are 4" shorter than stated length

Available in 6', 10', and 12' lengths.\* Available Color:



### ECONOMY BOW GATE (RBG)

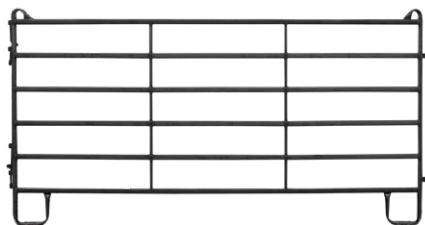
PRODUCT #	HEIGHT	WIDTH	WEIGHT
RBG069	9'	6'	92 lbs



### ECONOMY WALK THRU PANELS (RWT)

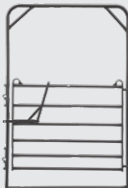
PRODUCT #	LENGTH	WEIGHT
RWT10	10'	75 lbs
RWT12	12'	83 lbs

# Panels & Gates



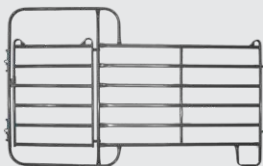
**PREMIER TALL PANEL | PPT** This 6' tall version of our popular Premier Panel combines versatility and safety. Constructed from our patented Quadraform™ tubing to allow for maximum strength and flexibility, each 12' long panel features two single-piece vertical stays fitted through drilled rails to further increase the structural integrity.

Available in 12' lengths only. Available Color:



### PREMIER BOW GATE TALL (PBG T)

PRODUCT #	HEIGHT	WIDTH	WEIGHT
PBG T069	9'	6'	126 lbs



### PREMIER WALK THRU PANELS TALL (PWTT)

PRODUCT #	LENGTH	WEIGHT
UWT12	12'	123 lbs



"When shopping for an outdoor arena, quality and affordability were two of the things I was looking for, and as one of the only barrel racers to compete in a riding helmet, safety is at the forefront of my mind. I knew that Priefert quality was the right thing for my ranch."

**FALLON TAYLOR** | World Champion Barrel Racer

Priefert Panels and Gates are powder coated with a high quality, Architectural Grade powder with UV inhibitors that result in an attractive, durable and high-quality finish.







## PONDEROSA WOOD POST FENCE

Priefert's Ponderosa wood post fence is a revolution in the fence industry. We've combined the aesthetic look of the western lifestyle with the quality, durability, and convenience of the Priefert powder coated tubing. A beautiful fence is a great way to beautify any home or property and increase property values. There is no other fence on the market that combines both the durability and functionality of a steel fence with the beauty and esthetic appeal that Ponderosa fence does.



### ATTRACTIVE

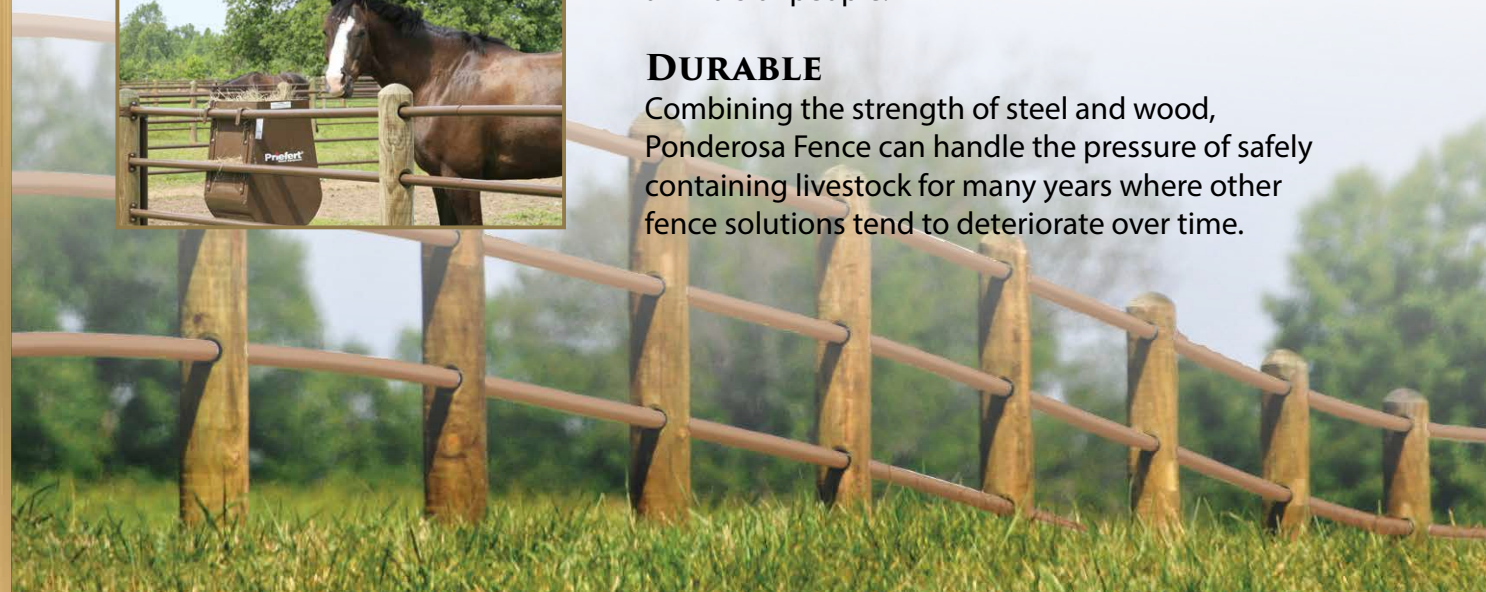
Combined the look of the western lifestyle with the quality, durability, and convenience of the Priefert powder-coated tubing.

### SAFE

Ponderosa Fence offers the strength of steel for confinement with no sharp edges or barbs to hurt animals or people.

### DURABLE

Combining the strength of steel and wood, Ponderosa Fence can handle the pressure of safely containing livestock for many years where other fence solutions tend to deteriorate over time.



## ALL METAL ESTATE FENCING

Priefert's unique all-metal Estate Fencing is attractive, durable, and easy to install. Utilizing the same swedge-connecting rail as our popular Ponderosa Fence, our new Estate Fencing flows beautifully along the contour of your land. With rails and posts constructed from galvanized material covered with an architectural grade powder coat finish, this fence resists fading, rust, and the other harsh outdoor conditions. The all-metal construction also means that this fence is strong enough to last a lifetime and safe enough to house livestock. Best of all, installation is easy, with no welding required.

### BUILT TO LAST

Posts are constructed from 12 gauge octagonal galvanized tubing with a beautiful black powder coat finish. This dual layer protection from the elements ensures that these posts are built to last.

### LOW MAINTENANCE

These rails are durable, long-lasting, and low maintenance. Best of all, there is no welding required for installation.

### DURABLE

With its all metal construction, Priefert Estate Fencing can handle the pressure of safely containing livestock for many years where other fence solutions tend to deteriorate over time.





# Horse Feeders



## HAY & GRAIN FEEDER (HGF)

Priefert's single horse Hay and Grain Feeder features a welded metal hay rack over a feed tub, making it ideal for feeding hay and/or grain. The sides of this sturdy feeder are constructed from 16 galvanneal gauge sheet metal, while the inside of the feeder is constructed from 16 gauge galvanneal material.



## 5' BUNK FEEDER (HFWHR)

Our 5' Bunk Feeder for Horses is available as a simple bunk feeder (HFWL) or as a bunk feeder with hay rack (HFWHR). This feeder features a durable poly liner with a pan depth of 9" and a 22.5" inside trough width.



## PASTURE HORSE FEEDER (PHFH)

The Pasture Horse Feeder with Hay Rack is ideal for feeding horses in pastures or paddocks. The feeder features a hay rack over a durable double tub poly liner with a 10.5" pan depth, making this feeder a great option for feeding both hay and grain.



## ROUND BALE FEEDER (RBFH)

Designed to be free of head and foot traps, the Round Bale Feeder for Horses is ideal for feeding round bales of hay to your horses or to your horned cattle. This feeder features a solid skirted design to decrease hay loss and prevent leg injuries.



## TOMBSTONE FEEDER (RBFT)

Designed to be free of head and foot traps, the Tombstone Round Bale Feeder is ideal for feeding round bales of hay to your horses. This feeder features a solid skirted design to decrease hay loss and prevent leg injuries. The smooth, rounded top loops prevent horses from rubbing their manes.

# Horse Waterers

These animal-safe tanks feature smooth rolled rims and are constructed from premium grade galvanized steel. Diagonal and horizontal corrugations provide the tanks with extra strength. Sturdy, rolled, sealed seams prevent leaks. The galvanized finish helps these water tanks resist rust and corrosion in harsh environmental conditions.

## ROUND GALVANIZED (WTR)

Our Round Galvanized Water Tanks are available in a variety of sizes and are ideal for use with horses, cattle, and other livestock.



ITEM #	RADIUS	CAPACITY (GAL)	WEIGHT(LBS)
WTR03	36"	80	48
WTR04	48"	158	70
WTR06	72"	394	123
WTR08	96"	717	185

## OVAL GALVANIZED (WTO)

Our 1' Deep Oval Galvanized Water Tanks are available in 4' and 6' lengths and are ideal for use with small livestock.



ITEM #	LENGTH	WIDTH	CAPACITY (GAL)	WEIGHT(LBS)
WTO241	48"	24"	48	21
WTO261	72"	24"	71	45

## OVAL GALVANIZED (WTO2)

Our 2' Deep Oval Galvanized Water Tanks are available in a variety of lengths and are ideal for use with horses, cattle, and other livestock.



ITEM #	LENGTH	WIDTH	CAPACITY (GAL)	WEIGHT(LBS)
WTO232	36"	24"	72	42
WTO242	48"	24"	95	48
WTO252	60"	24"	118	61
WTO262	72"	24"	142	71

# Tru-Test Automatic Waterer

## TRU-TEST OPEN TOP (WATERPRO2)

The WaterPro2 Open Top Waterer is ideal for use with equines, and is often installed in or nearby a stable or shed. Designed to withstand the harshest weather conditions, these units provide a reliable fresh water supply to your valuable animals year-round.



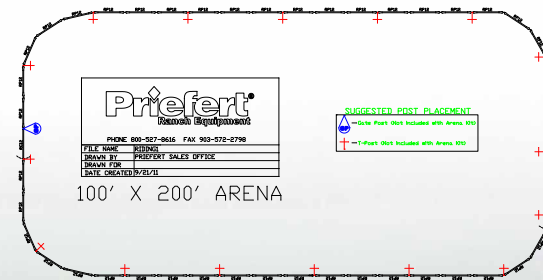


## Riding Arenas

## RIDING ARENAS

Priefert's Riding Arenas are ideal for a number of disciplines, providing a safe and attractive area for riding and practicing. Our standard Riding Arenas are 100' wide by 200' long and include a single 12' gate, as well as a 6' x 9' bow gate. This arena layout is available in three different panel options: Economy, Utility, and Premier.

ITEM #	PANEL TYPE	COLOR	PANEL HEIGHT
<b>RIDING1</b>	Economy	Green	65"
<b>RIDING2</b>	Utility	Brown	62"
<b>RIDING3</b>	Premier	Grey	64"

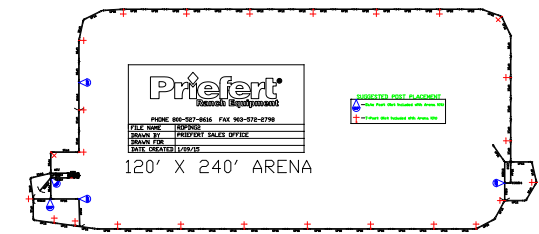
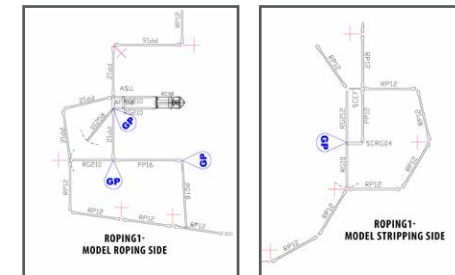


## Roping Arenas

Priefert offers a wide variety of pre-configured roping arenas designed for today's roper. Each of these arenas can be customized to fit your specific needs.

## BASIC ROPING ARENA

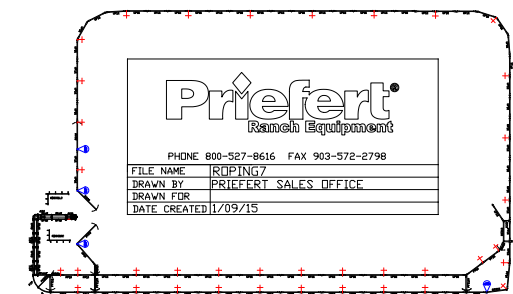
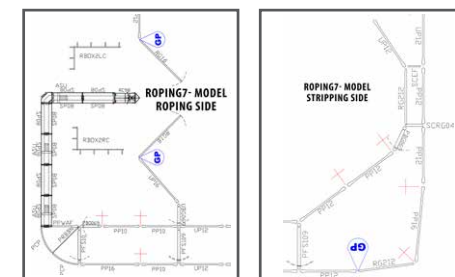
This "Bare Bones" 120' x 240' arena is our most basic roping arena design. It includes the RC19M and is available in your choice of Economy Panels or Utility Panels.



ITEM NUMBER	PANEL TYPE	COLOR	PANEL HEIGHT
ROPING1	Economy	Green	65"
ROPING2	Utility	Brown	62"

## ROPING ARENA W/ 10' RETURN ALLEY

This 150' x 250' arena design includes the RC19M, a 10' wide return alley, and is available in your choice of Utility, Premier, or Rough Stock Arena Panels.



ITEM NUMBER	PANEL TYPE	COLOR	PANEL HEIGHT
<b>ROPING7</b>	Utility	Grey	62"
<b>ROPING8</b>	Premier	Grey	64"
<b>ROPING9</b>	Rough Stock	Grey	72"



While the idea of having your own riding arena and horse stalls is appealing, the thought of designing and building it is often a daunting one. Not to worry, this is where the experts at Priefert Direct can help you out. We offer free livestock flow consulting and design, and we'll even create a CAD diagram to help ensure that you get the perfect arena layout to meet your needs. Best of all, we'll ship your new arena or stalls directly to your local Priefert dealer.





# Roping Chutes



## MANUAL ROPING CHUTE (RC19M)

For over 20 years, Priefert has dominated the industry with state-of-the-art innovations. The RC19M continues this tradition with an improved fingertip touch release and an improved braking system that guarantees the same release of the calf or steer every time with no adjustments required. The official chute of the PRCA, USTRC, NTRL, WTRC, WSTR, NFR and other major roping organizations, the RC19M is the chute of choice by professionals. The RC19M chute is the quietest, most durable chute on the market.

The official chute used by



## RC98SCOREAI SCORE CHUTE

The ULTIMATE Training Aid for ropers, the interior neck gate allows the roper to hold the steer inside the chute and repeatedly open the front gate to "score" his or her horse.

Length: 86"  
Width: 36"  
Height: 68"



## RC98AI AUTOMATIC ROPING CHUTE

Ideal for the practice pen, this chute virtually eliminates the need for extra chute help. The push of a button operates the features of this chute.

Length: 86"  
Width: 36"  
Height: 68"



## RC98Q36 SOLAR-POWERED ROPING CHUTE

This state-of-the-art solar-powered roping chute requires no electrical cords or air lines, just the sun. A simple remote operates the front release gate.

Length: 86"  
Width: 36"  
Height: 64"



## RC19C COMPETITION ROPING CHUTE

The most popular choice for fairgrounds and rodeo arenas, this chute offers the same features of the RC98M, plus additional upgrades designed for competition arenas.

Length: 106"  
Width: 36"  
Height: 64"

# Roping Chute Accessories



## CALF CHUTES

Priefert's Calf Chute is ideal for the cowboy or cowgirl who only ropes calves. It offers the same great functionality of our larger chutes at a fraction of the size and a fraction of the price.



## ROPING CHUTE SECTIONS

Priefert's Roping Chute Add-on Section helps lend speed and efficiency to any roping competition by allowing producers to keep animals staged and ready for the next run. Each add-on section features contoured sides made to the same specifications as our roping chutes to create a seamless flow from section to chute.



## STEER ALLEY KITS

Ideal for constructing lead ups to roping chutes, Priefert's Steer Alley Kits are made to the same specifications as our standard roping chutes and add-on sections to create a seamless flow from alley to section to chute.



## ADJUSTABLE ROPING BOXES

Priefert Roping Boxes provide a safe place for horse and rider to wait for the release of a steer or calf. Our Roping Boxes are sold individually as a "Head Box" or a "Heel Box". This style of roping box allows you to easily adjust barrier from 16' to 22' deep in seconds.



## STRIPPING EQUIPMENT

This Stripping Chute features openings to provide easy access for removing ropes, while an adjustable rear plate helps discourage the steer from backing out of the chute.

"My favorite thing about a Priefert Roping Chute is that I know I'm going to be practicing exactly like I'm competing, while knowing I've got the quality and consistency that Priefert is known for."

**TREVOR BRAZILE** | 25X World Champion





# Horse Stock

Horse Stocks have been an essential at vet clinics and breeding farms for years. Today, more and more horse owners at all levels are finding the value of the safe, controlled environment that horse stocks create for common handling issues at the family farm. With adjustable front and rear doors and emergency side exits, Priefert's Horse Stock easily fits most horses and mules for safe restraint. This versatile and affordable stock includes a Tie Bar and is ideal for vet work, for use as a wash rack, or anytime you want your horse to stand in one place. The Architectural Grade Powder Coat Finish helps the product to resist rust, scratches, and fading to add years of life to your investment.



ITEM #	DESCRIPTION
HS	Horse Stock (Assembled)
HSC	Horse Stock (Assembled w/ Platform)



Horse Stock Anchors  
Anchors kit (4) (HSAK)  
Individual Anchor (HSA)



Horse Stock Platform (HSPLAT)

# Land Grader | PLG08

Priefert's Land Grader is the ideal tool for dirt and gravel road maintenance. Designed for turning, mixing, shifting, and leveling dirt and/or gravel, the Land Grader has two forward-cutting blades mounted on a sturdy, high grade steel frame with runners and side pans. This 8' wide grader features a 3-point mount to attach to any Category I Tractor.



# Arenamaster

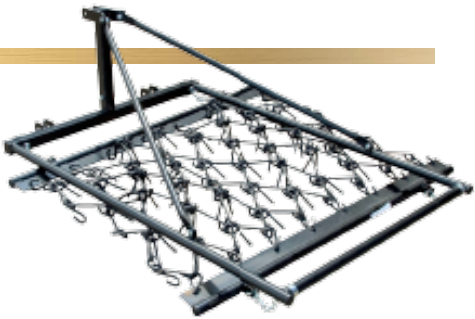
Priefert's ArenaMaster™ eliminates expensive hydraulics and allows operators to break packed ground, pulverize clumps of dirt, and leave consistent footing; often in a single pass. Offset rows of S-tines provide multiple points for ground breaking efficiency. The leveling bar aids in breaking clods, leveling high spots, and filling in holes. The trailing "Clump Buster" further pulverizes dirt clods and packs the sub-surface for consistent footing; it also fluffs the top layer of dirt to ensure a smooth surface, suitable for any practice or competitive arena. The heavy "Push/Drag" box blade can be used in the "down" position to push dirt when the tractor is in reverse, which comes in handy for back-filling roping boxes or moving dirt into corners or other hard-to-reach places.



PART #	DESCRIPTION	WEIGHT	SUGGESTED HORSEPOWER	# OF S-TINES
AG06	6' Arena Master	699 lbs	35 +	18
AG06NB	6' Arena Master NO BLADE	564 lbs	35 +	18
AG08	8' Arena Master	915 lbs	40 +	24
AG08NB	8' Arena Master NO BLADE	694 lbs	40 +	24

# Chain Harrows

Priefert Chain Harrows with Lift Kits easily attachment to your tractor's 3-point connection, giving the operator maximum control. Ideal for light duty arena grooming, the harrow mat is constructed from heavy, durable, high carbon, heat-treated steel. Each digging tine is 4" long, and the ½" chain-style mat features a "double tine" design. The Draw Bars and Lift Kit feature an Architectural Grade Powder Coat Finish with UV inhibitors to add years of life to your investment by helping the product resist rust, scratches, and fading.



ITEM #	MAT SIZE	WEIGHT
PICH44LK	4' X 4'	208
PICH46LK	4' X 6'	328
PICH48LK	4' X 8'	343
PICH412LK	4' X 12'	413





## *Unbridled Commitment*

### **TO SAFETY**

Whether your equine partner is a finely tuned performance athlete or just a valued member of your family, safety is of the utmost importance. Priefert is committed to creating reliable products that are safe for both horse and handler. Priefert equine feeders are designed to eliminate any rough or sharp edges and our panels are engineered to be strong and sturdy while eliminating leg traps and reducing potential snag points for tack. When it comes to safely feeding, housing, and exercising your horse, Priefert offers a variety of horse-safe equipment options.

### **TO QUALITY**

Priefert's commitment to quality and innovation began with our founder, Marvin Priefert, over 50 years ago. Every Priefert product is designed, engineered, and built to the highest standard of quality. Our equine equipment is not only attractive, but also durable and long lasting. Our superior powder coat finish makes for a low-maintenance product that looks beautiful for years to come. Combining this with our commitment to safety and unique innovative features, makes Priefert the best value on the market.

### **TO CUSTOMER SATISFACTION**

Priefert is committed to building items that not only meet the needs of our equine partners, but that also exceed the expectations of their human counterparts. Our goal is to consistently deliver a product and user experience that is above and beyond the industry standard. Priefert equipment is proudly used and endorsed by top equine professionals and organizations, lending further credibility to our brand.

### **TO YOUR HORSE**

No product line exemplifies Priefert's commitment to quality and safety more than our equine equipment. More than just a teammate in a given discipline or event, horses are cherished members of our families. We understand that, regardless of which discipline you are involved in, horse owners want their valued animals to be safe, happy, and healthy. Our top-quality products are designed with safety and durability in mind, ensuring that you and, most importantly, your horse, are beyond satisfied with their longevity and performance.