

RIGS

RIGHT OF WAY & INDUSTRIAL GUARDING SYSTEMS

BY **Priefert®**

YOUR TWO MOST VALUABLE ASSETS ARE **PEOPLE & EQUIPMENT**
PROTECT BOTH WITH **R.I.G.S.**



Is your current perimeter system enough?

Do you need different types of perimeter systems?

Would you like to make your sites easier to identify by your employees and contract workers?

We have the answer!

Safely protect the perimeters of your well sites and right of ways with RIGS Guarding Systems. We offer several different types of perimeter guards, each can be custom designed to fit your specific needs. An Architectural Grade Powder Coat Finish with UV inhibitors helps the product resist scratching and sunlight damage, adding many years of life to your investment.

TABLE OF CONTENTS

Perimeter Guards

Panels.....3

KenStakes.....3

Wire Mesh.....4-5

No-Weld Guards.....6

Fencing Products

H-Braces.....6

Gates.....7

Color Chart.....7

Cattle Guards.....8



Maximize Your Investment By Saving Time & Money

Assembles in Minutes

No special skills required.

Accessibility

Quick removal of all or part for maintenance and workovers; can easily be taken down and reinstalled without destroying the fence.

Durable

Long lasting, heavy duty panels with UV Protected Architectural Grade Powder Coat Finish provide security and maintain their appearance for years. RIGS Panels are recyclable and portable for repeated use at multiple sites.

Aesthetics Add Value

Attractive location sites please landowners while providing intrinsic value and a professional appearance to the asset.

Long Term Return

When compared to other perimeter guarding options (chain link or barbed wire) RIGS offers exceptional value in security and protection.



PERIMETER GUARDS (SIX RAIL)

Features:

- Modular & Portable
- Easily Adaptable, Reusable and Safe
- Multiple Lengths & Gauges Available
- Architectural Grade Powder Coat Finish with UV Protectors

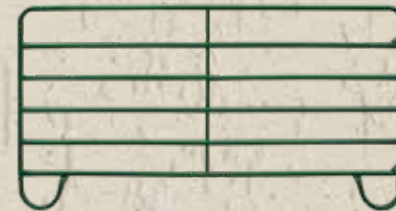


PANELS



Utility Panel

- Features:**
- Chain Connectors
 - 1-5/8" Round Tubing
 - 62" Tall
 - 10' Length 49 lbs
 - 12' Length 58 lbs
 - 16' Length 75 lbs



Economy Panel

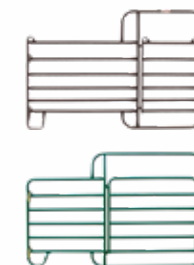
- Features:**
- Chain Connectors
 - 1-5/8" Round Tubing
 - 65" Tall
 - 10' Length 46 lbs
 - 12' Length 53 lbs
 - 16' Length 73 lbs

ACCESSORIES



KENSTAKE

A KenStake is a 10" long 1/2" rod with welded cap and connected chain used to keep your Perimeter Guard panels from shifting or being moved by animals. KenStakes also deter theft.



WALK-THRU PANELS

These panels include a "walk thru" gate to provide easy access to your equipment.



PERIMETER GUARDS (WIRE MESH)

Features:

- 72" Tall Panels
- Galvanized 1-5/8" Tubing
- 8 Gauge 2"x4" Non-Climb Wire Mesh
- Modular & Portable
- Easily Adaptable, Reusable and Safe
- Multiple Lengths Available
- Architectural Grade Powder Coat Finish with UV Protectors
- Includes 3-Way Connectors, Barbed Wire Extensions are available separately



Easy Access for Repairs

Greater availability to work on projects without destroying the fencing.



Our Perimeter Guards are

Versatile & Assemble In Minutes!

RIGS
RIGHT OF WAY & INDUSTRIAL GUARDING SYSTEMS

With Features Like...

Angled Barbed Wire Extensions

Angled Barbed Wire Extension arms are used to increase the height and provide additional security for the Perimeter Guards. The arm is a U-Shaped bent metal with wire slots, welded directly onto a 3-way connector that slides into the end frames of two adjoining panels.

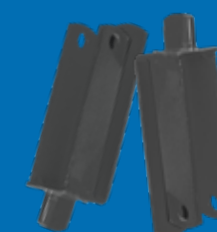
Standard Barbed Wire Extensions

Each standard extension arm is made of 1.05" OD balled pipe with 3 barbed wire loops, welded directly onto a 3-way connector that slides into the end frames of two adjoining panels.



Standard 3-Way Connector

Standard 3-Way Connectors are used to securely join the tops and bottoms of your Perimeter Panels together.



**CALL TODAY
FOR INFORMATION!**

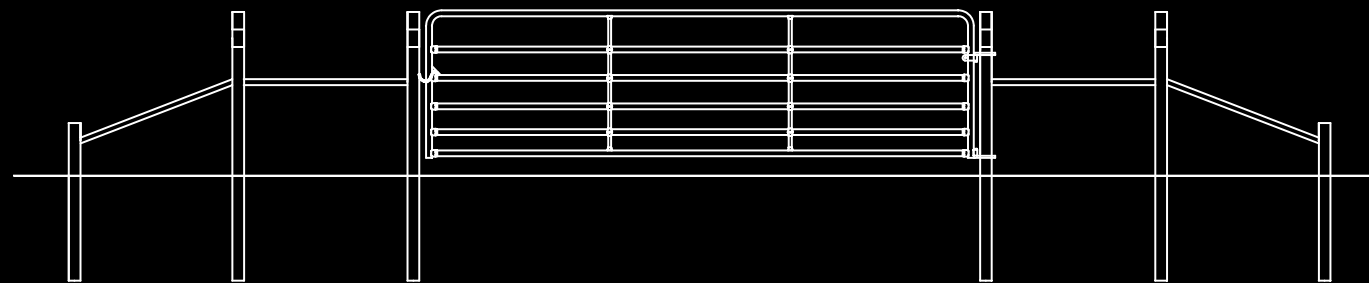
800-527-8616

*See Available
Color Options
on Page 7.*

THE BEST PROTECTION FOR YOUR VALUABLE ASSETS

Our durable guarding systems help protect your production units, valves and controls from damage by vandals and animals.





H-BRACES

STRAIGHT H-Brace

Features:

- 2-7/8"
- 4' & 8' Lengths
- Post Height 94"

Also Available:

- Bolt-on Deadman



HINGED H-Brace

Features:

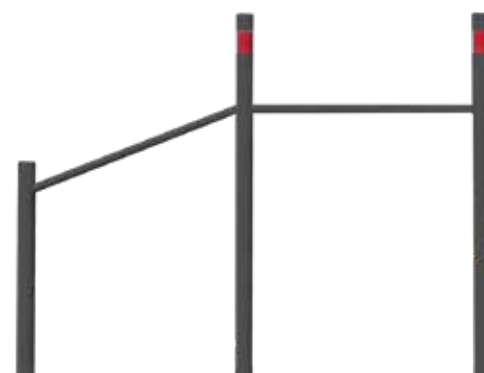
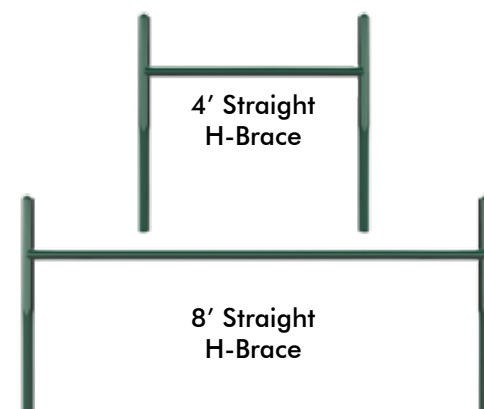
- 2-7/8" OD
- 4' x 4' Length
- Post Height 94"

"Domed" Tops create smooth surfaces with no sharp edges and keeps moisture out.

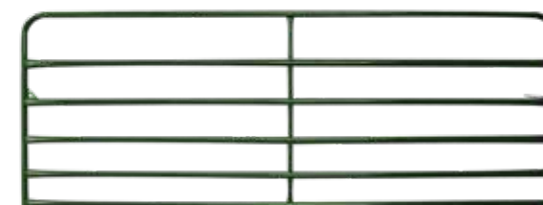
4" Post H-Brace w/ Deadman

Features:

- H-Brace is 9' long
- Post are 4" OD 3/16" thick with flat capped tops.
- Main post are 7'8" long and are designed to be concreted 3' in the ground and have 4'8" above ground.
- Hinge side H-Brace comes predrilled and ready to mount your Priefert gate.

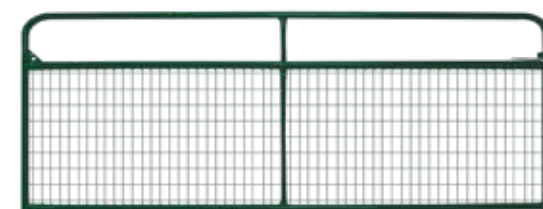


GATES



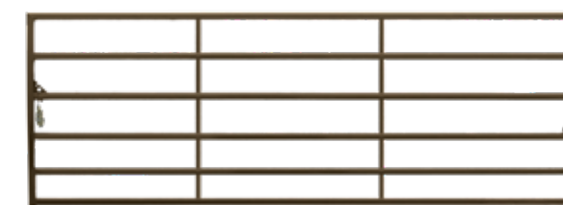
Economy Gate

50-1/2" Tall
LENGTH*: 4', 6', 8', 10', 12', 14', 16', 18', 20'



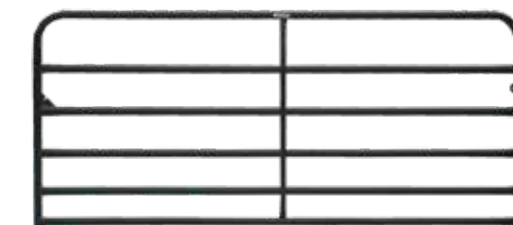
Wire Filled Economy Gate

50-1/2" Tall
LENGTH*: 4', 6', 8', 10', 12', 14', 16'



D-Gate

47-1/2" Tall
LENGTH*: 4', 6', 8', 10', 12', 14', 16'



Bull Gate

50-3/4" Tall
LENGTH*: 4', 6', 8', 10', 12', 14', 16', 18', 20'

*All Gates are 5" shorter than stated lengths to allow for proper clearance through an opening of that size

OPTIONAL COLOR CHART FOR ALL GUARDING SYSTEMS

BLACK	PRIEFERT BLUE	GUNMETAL GREY
SADDLE BROWN	FORREST GREEN	SAFETY YELLOW*

* SAFETY YELLOW AVAILABLE FOR AN UPCHARGE

An Architectural Grade Powder Coat Finish with UV inhibitors helps the gate resist scratching and sunlight damage, adding many years of life to your investment.



CATTLE GUARDS

**DESIGNED TO HANDLE MULTIPLE LOAD
RANGES AND DIVERSE APPLICATIONS**



www.priefert.com

Features:

- **Two load classes of cattle guards available.**
 - H-10 for axle load to 16,000 lbs.
 - H-20/HS-20 for axle load to 32,000 lbs.
- **Follows guidelines considered by AASHTO.**
- **Cattle guards are modular in design and are all bolt together to achieve the different strength categories.**

**CALL TODAY
FOR INFORMATION!**

800-527-8616